

CHEETAH OR LEOPARD?



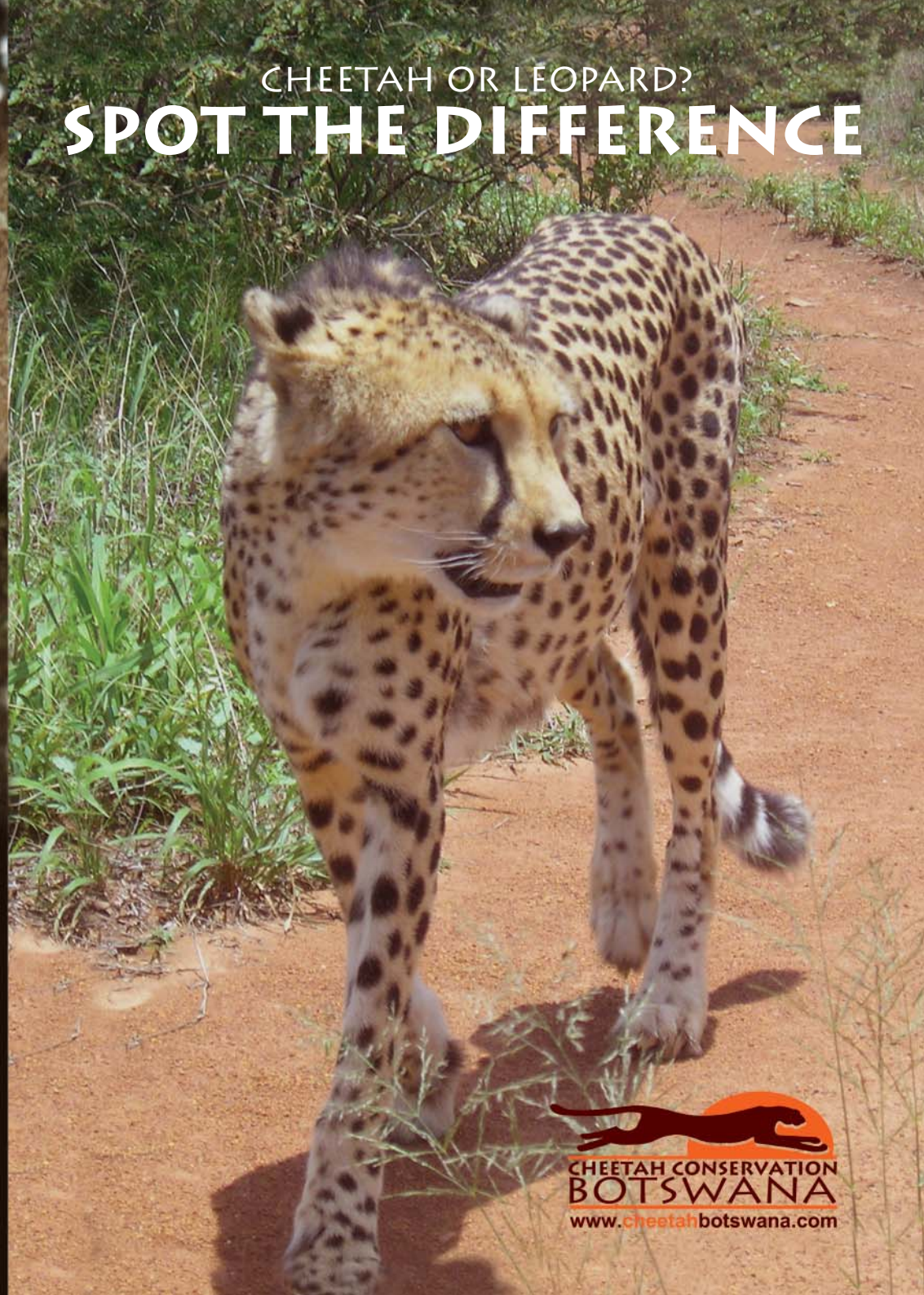
Other community resources are available from  
**CHEETAH CONSERVATION BOTSWANA**

Tel: +(267) 350 0613 or e-mail: [community@cheetahbotswana.com](mailto:community@cheetahbotswana.com)  
Private Bag 0457, Mokolodi Nature Reserve, Gaborone



Printed in Gaborone, Botswana, by IMPRESSION HOUSE

# CHEETAH OR LEOPARD? SPOT THE DIFFERENCE





# SPOT THE DIFFERENCE

Cheetahs and Leopards often occur in areas together, outside National Parks. They are similar in appearance, but there are important differences between the two.

If you share your land with predators, knowing the differences between them will also help identify suitable methods to deter them so as to protect livestock.

For further information, contact:  
Cheetah Conservation Botswana, P.Bag 0457,  
Mokolodi Nature Reserve. Tel: +(267) 350 0613  
e-mail: [community@cheetahbotswana.com](mailto:community@cheetahbotswana.com)



## CHEETAH

## LEOPARD



**Head:** small, with black tear marks from the eyes to the corner of the mouth.

**Head:** Wider, with large canine teeth and no tear marks from the eyes.



**DIURNAL**  
Active in daytime

**NOCTURNAL**  
Active at night



Front



Rear

Spoor



Front



Rear

Spoor

A good tree climber?



**Cheetah Habits:** May sometimes occur in groups, does not return to kills, hunts by stalking and sprinting to chase down prey and suffocates by a throat bite. Young cheetahs have a mantle of light coloured fur down their backs.



**Leopard Habits:** Usually solitary, hunts by stalking and pouncing on prey, will often store a kill in a tree or under vegetation to return to it later.